



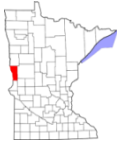
**The Minnesota National Guard is conducting flood fighting operations in order to support civil authorities along the Red River Valley**

More than 450 **Minnesota Army National Guard** Soldiers from the Moorhead-based 2nd Combined Arms Battalion, 136th Infantry are currently supporting the flood fight.

The **Minnesota Air National Guard** is supporting the flood fight with two Joint Communications Platform (JCP) trailers. The trailers provide satellite, telephone, radio, data, and wireless capabilities.

**Minnesota National Guard by county**

**Wilkin County: 36 personnel and 7 vehicles**



Wilkin County Task Force in Breckenridge conducting dike patrols. Quick Reaction Force (QRF) on stand-by. In Wolverton, Task Force is securing sandbag sites, monitoring pumps and water levels, and patrolling dikes.

**Clay County: 301 personnel and 118 vehicles**



Dike construction suspended in south Moorhead. Dikes raised to 42-43 feet. Rescue force of seven vehicles assisted Sheriff’s deputies with family rescue. Also: manning traffic control points, dike monitoring patrols, roving patrols, pump and water level monitoring. In Georgetown, conducting dike patrols and monitoring evacuation routes.

**Norman County: 82 personnel and 24 vehicles**

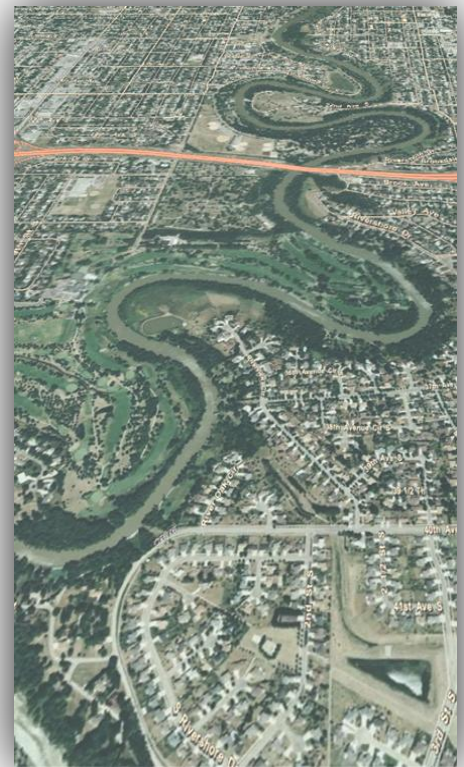


Continue to provide dike patrols, assist with sandbag movement, and monitor and secure pumps within the cities of Perly, Hendrum and Halstad. Military forklift assisting the loading and transport of sandbag pallets.

**Polk County: 35 personnel, 11 vehicles**



Polk County Task Force staged in Crookston Armory. Conducting route reconnaissance of 62 miles of road in Polk County. Joint Communications Platform (JCP) trailer staged in Crookston for potential communications back up.



The Minnesota National Guard, under the direction of the Governor, will continue to provide assistance to civil authorities in support of flood fighting efforts.

**Minnesota National Guard equipment in use**

- 2 – UH-60 Black Hawk helicopters
- 1 – Joint Communication Platform trailer in Crookston
- 1 – Joint Communication Platform trailer in Moorhead
- 2 – forklifts
- More than 100 military vehicles

**Minnesota National Guard in the next 24 hours**

2-136 IN (CAB) continues to support **Wilkin County** with dike patrols, securing sandbag sites, monitoring pumps, checking water levels.

2-136 IN (CAB) continues to support **Clay County** with traffic control points (TCPs), dike monitoring patrols, roving patrols, dike and pump monitoring, sandbag transport efforts, and monitoring of evacuation routes.

2-136 IN (CAB) continues to support **Norman County** with dike patrols and sandbag movement, as well as monitoring and securing pumps within the cities of Perly, Hendrum, and Halstad.

2-136 IN (CAB) continues to support **Polk County** with providing route reconnaissance of 62 miles of road.

133rd Airlift Wing and 148th Fighter Wing continue to support the flood fight with specialized Joint Communications Platform (JCP) trailers.

FOR MORE INFORMATION on the state of Minnesota's disaster relief and recovery efforts visit [www.MinnesotaRecovers.org](http://www.MinnesotaRecovers.org).

FOR MORE INFORMATION, CONTACT:

The State Joint Information Center at 651-201-7477.