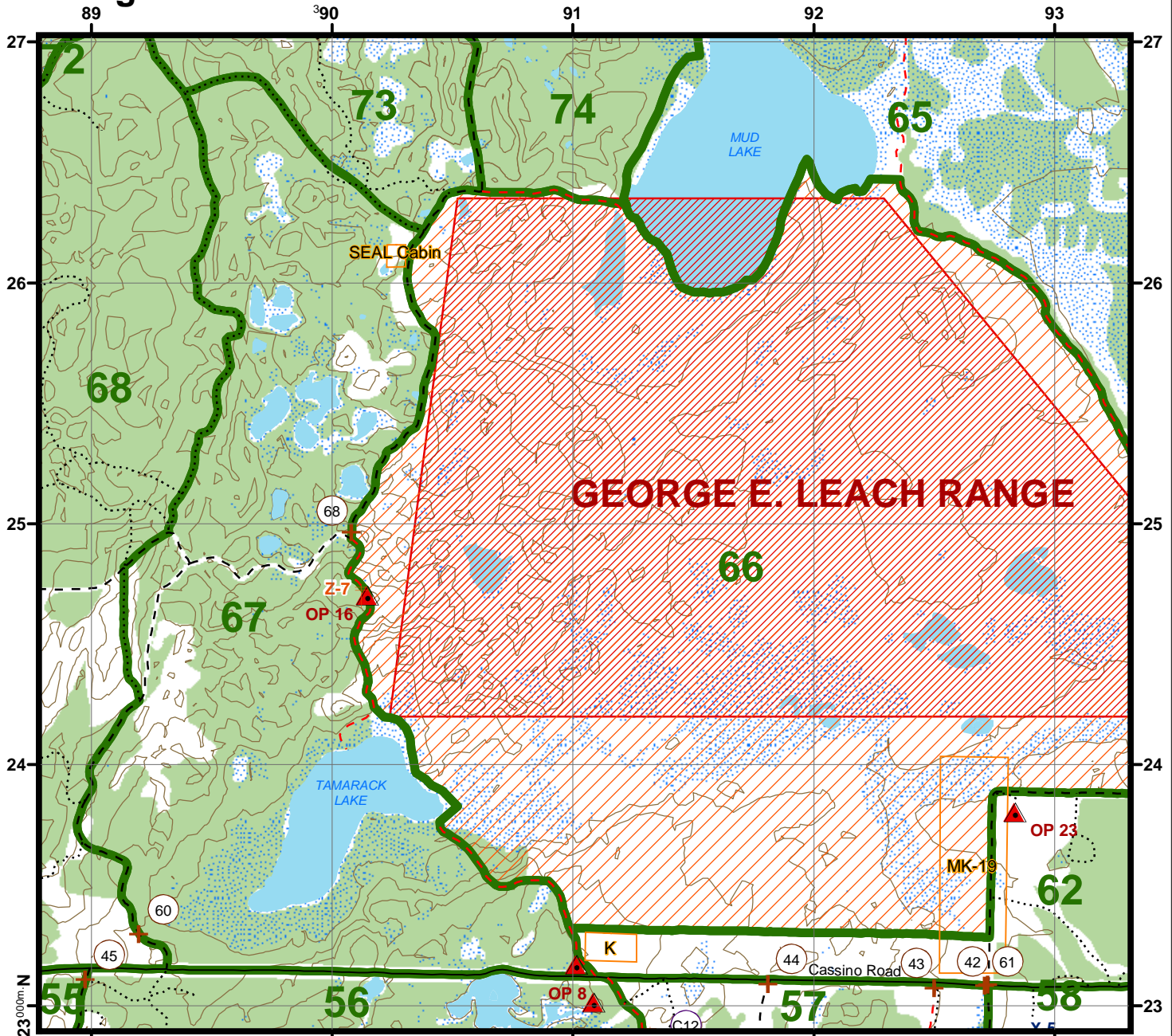


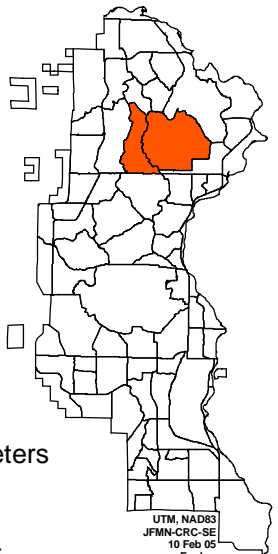
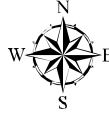
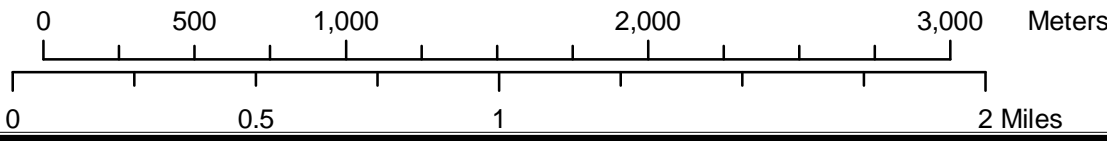
Training Areas 66-67

1:25000



- | | |
|----------------------|-----------------------|
| Helipads | Ranges |
| Mag Drop | Training Areas |
| Picnic Area | Bio-Hazard Area |
| Water Points | Winter Training Areas |
| Observation Point | Lakes |
| Two-Way Antenna | Rivers |
| Barriers - Cable | Wetlands |
| Barriers - Permanent | Woodlands |

- ### ROADS
- | |
|-------------------------|
| Trails |
| Fire breaks |
| Fair or dry weather |
| Light duty, all weather |
| Secondary all weather |



UTM, NAD83
JFMN-CRC-SE
10 Feb 05
Ferdon