

Arden Hills Army Training Site (AHATS)



Range Regulation 2010

**Minnesota Army National Guard
Arden Hills City Hall Building
1245 W Hwy 96
Arden Hills, MN 55112
651-634-5229 Office
651-775-1284 Cell**

Table of Contents

Section 1

Introduction and General Information

Section 2

Approved Pyrotechnics

Section 3

Requesting Training Areas, Leasing, and Civilian Activities

Section 4

Priority and Land Usage

Section 5

Training Area Usage and SDZ's

Section 6

Environmental Management

Section 7

Digging and Cleaned Contaminated Sites Map

Section 8

Fires

Section 9

Petroleum, Oil and Lubricants

Section 10

Clearance Procedures

Section 11

Tracking Usage and Key Control

Section 12

Storage of Government Property

Section 13

Emergency Procedures and Contact Numbers

Section 1 – Introduction and General Information

Introduction:

- 1. This manual is designed to establish procedures for request and use of the Arden Hills Army Training Site for military and non-military users.**
- 2. The Camp Ripley Commander is responsible for final approval and/or disapproval for the use of the Arden Hills Army Training Site by non-military and civilian agencies.**
- 3. The Camp Ripley Operations Officer is responsible for preparation of lease agreements. This preparation includes coordination with the leasing agency, and the various supporting departments at Camp Ripley.**

General Information:

- 1. The Arden Hills Training Site (AHATS) has recently come under the control of the Minnesota Department of Military Affairs (DMA). While the land is federally owned, the land and all activities are managed by the DMA through Camp Ripley Operations and Range Control Offices.**
- 2. Formally known as the Twin Cities Army Ammunition Plant (TCAAP) the facility produced over 16.5 billion rounds of small-arms ammunition for World War II, Korean, and Vietnam Wars. During these operations several areas in AHATS became contaminated with hazardous wastes. Both soils and ground water were contaminated and TCAAP was designated as a superfund site. The clean-up effort is ongoing and troops in training should be made aware of and avoid restricted areas and clean-up facilities.**
- 3. Several buildings remain on the AHATS facility. These buildings are OFF-LIMITS to troops as they pose a health risk to individuals who enter. Units requesting to use buildings for training must submit a request indicating which buildings they wish to use and type of training being conducted in addition to their ATS Form 23.**
- 4. There is “NO LIVE FIRE ALLOWED” at AHATS.**

Section 2 – Approved Pyrotechnics

UTILIZATION OF PYROTECHNICS HERE AT AHATS.

- 1. Below is a list of DODIC and Nomenclature information of different types of Pyrotechnics that are listed by Training Area Usage.**
- 2. Units can request the use of Pyrotechnics on a case by case basis. The Units need to submit a Memorandum requesting the use of pyrotechnics to include DODIC, nomenclature, amount, time frame to be fired, and training area to be used.**
- 3. Training Area Coordinator will then contact that specific unit.**
- 4. Once unit is finished training. Notice that there is an ammo drop (BOX) container at Hamline Gate #1 for all unspent blank and pyrotechnics ammunition.**
- 5. Please do not throw ammo away down range. Place it in the ammo box.**
- 6. TRAINING AREA COORDINATOR WILL THEN GET THE UNUSED AMMO BACK TO CAMP RIPLEY RANGE CONTROL/AMMO SECTION.**

DODIC	Nomenclature	Authorized Training Area's
A080	Ctg 5.56mm Blank M200	1, 2, 3, 4, 5, 8, 10
A075	Ctg 5.56mm Blank M200 Linked (SAW)	1, 2, 3, 4, 5, 8, 10
A111	Ctg 7.62mm Blank M82 Linked	1, 2, 3, 4, 5, 8, 10
G811	Body M69 f/ Use w/ M228 Fuze	1, 2, 3, 4, 5, 8, 10
G878	Fuze M228 f/G811	1, 2, 3, 4, 5, 8, 10
G924	HG RC M25A2	1, 2, 3, 4, 5, 8, 10
G940	HG Smoke Green M18	1, 2, 3, 4, 5, 8, 10
G945	HG Smoke Yellow M18	1, 2, 3, 4, 5, 8, 10
G950	HG Smoke Red M18	1, 2, 3, 4, 5, 8, 10
G955	HG Smoke Violet M18	1, 2, 3, 4, 5, 8, 10
G982	HG Training Smoke M83	1, 2, 3, 4, 5, 8, 10
L305	Sig Illum Green Star Para M195	1, 2, 3, 4, 5, 8, 10
L306	Sig Illum Red Star Cluster M158	1, 2, 3, 4, 5, 8, 10
L307	Sig Illum White Star Cluster M159	1, 2, 3, 4, 5, 8, 10
L311	Sig Illum Red Para M126A1	1, 2, 3, 4, 5, 8, 10
L312	Sig Illum White Star Para M127	1, 2, 3, 4, 5, 8, 10
L314	Sig Illum Green Star Cluster M125	1, 2, 3, 4, 5, 8, 10
L367	Sim Launch Antitank (ATWESS) M22	2, 3, 4, 5, 8, 10
L495	Flare Surface Trip M49A1	1, 2, 3, 4, 5, 8, 10
L594	Sim Proj Ground Burst M115A2	2, 3, 4, 5, 8, 10
L598	Sim Booby Trap Flash M117	1, 2, 3, 4, 5, 8, 10
L599	Sim Booby Trap Illum M118	1, 2, 3, 4, 5, 8, 10
L600	Sim Booby Trap Whistling M119	1, 2, 3, 4, 5, 8, 10
L601	Sim Hand Gren M116A1	2, 3, 4, 5, 8, 10

Section 3 – Requesting Training Areas, Leasing Policy Procedures, and Civilian Activities

- 1. MNARNG Units will request use of AHATS by remote RFMSS access. All other Military and Civilian users must submit an ATS Form 23 to the AHATS Training Area Coordinator no later than 30 days prior to the requested date.**
- 2. A full time (AGR or Technician) NCO of the unit requesting a training area is required to attend a TAC briefing at Arden Hills City Hall with the TAC within 3 months of using AHATS. This NCO will act as the Point of Contact (POC) with the AHATS TAC.**
- 3. If you are unfamiliar with what the installation has to offer, we recommend the informational briefing and facilities tour. Schedule this through the AHATS Training Area Coordinator.**
- 4. The Training Area Coordinator (TAC) will inspect training areas upon the unit's departure. Any discrepancies will be the responsibility of the unit to clean.**
- 5. All Civilian activities are still required to fill out an ATS-23 form and e-mail to jamie.leclair@mn.ngb.army.mil they will then be placed in RFMSS and scheduled for safety brief with Training Area Coordinator. If any type of lease is required agencies will coordinate this through the Camp Ripley Operations office with james.krousey@mn.ngb.army.mil**
- 6. The leasing agency or the Camp Ripley Commander may cancel a lease at anytime. However, if you cancel, you may liable for expenses incurred by Camp Ripley related to your request for leasing. Cancellation must be written notification.**
- 7. Camp Ripley will make every effort to avoid canceling your lease. If your lease needs to be canceled because of military priority you will be notified immediately and every attempt to meet your needs will be explored.**

Section 4: Priority and Land Usage.

Priority:

Priority for use of the Arden Hills Army Training Site facility is as follows:

- 1) Military Units**
- 2) Non-military Government and Law Enforcement Agencies**
- 3) Civilian Organizations**

Reservations: In accordance with the priorities identified for anticipated users, facilities are reserved on a first come first serve basis. We will not reserve any resources until we receive a written request.

Confirmation: We will confirm your request by sending a lease agreement for your signature. The lease for the use of AHATS must be signed prior to use. Contact the Operations Office at (320) 616-2708 to arrange this.

Cost: For leasing purposes, we have developed prices based on operating costs.

Insurance: All civilian organizations and individuals using the Arden Hills Army Training Site must have adequate insurance for all persons and property associated with their activities. **SIGNED WAIVERS DO NOT QUALIFY AS INSURANCE.**

Land Use:

Priority consideration is given to land use practices that are intended as training exercises for the benefit of military units, non-military governmental units, and law enforcement agencies. The training exercises may require the use of both motorized and non-motorized modes of transportation for field maneuvers including but not limited to tracked vehicles, 4-wheel drive wheeled vehicles, All Terrain Vehicles (ATVs), snowmobiles, horses, etc. These modes of transportation are permissible but must be coordinated through the Camp Ripley Operations Office.

Civilian organizations seeking recreational opportunities are not permitted to use ATVs, snowmobiles, or horses. Standard automobiles and trucks for transporting participants to an event on site are permitted only on established roadways. Off road field maneuvers with any vehicle is prohibited.

Section 5: Training Area Usage and SDZ's

- 1. AHATS personnel are authorized immediate access to all unit locations within the training areas without interference from those units. AHATS personnel will not interfere with training unless an unsafe act is observed.**
- 2. Areas off-limits to vehicles (Contaminated Areas) are marked with yellow signs that say "CAUTION DO NOT DIG OR DISTURB SOIL" Units should be aware of and plan training events to avoid these areas.**
- 3. No alcoholic beverages are permitted in field training areas at any time. NO EXCEPTIONS.**
- 4. DUDS /UXO. If a soldier encounters a DUD, Instruct them to take the following steps:**
 - (1) DO NOT touch or handle the DUD in any way.**
 - (2) Mark the area of the DUD with available materials without disturbing the DUD.**
 - (3) Notify AHATS TAC immediately and provide whatever information you have regarding the DUD (size, shape, color, location, method of marking, etc.**
- 5. Privately Owned Vehicles (POV'S) are restricted from the field training areas except in the following situations:**
 - (1) The AHATS TAC may grant exceptions to this policy. Requests must be made 24 hours in advance.**
 - (2) Civilian personnel or contractors conducting authorized training or activities.**
- 6. Speed limits on all roads are 25mph during daylight and 15 mph during hours of darkness.**
- 7. All accidents will be reported in accordance with AR 385-40, Accident Reporting and Records. Accidents/incidents occurring within the training areas, where cause can be contributed to standards or procedures of support failure will be reported. If an accident or incident happens then an ACCIDENT INCIDENT REPORT needs to be filled out and kept on file with the AHATS TAC ASAP.**
- 8. Use of live ammunition is strictly prohibited. The use of blank ammunition and pyrotechnic devices must be coordinated with Camp Ripley Operations no later than 60 days prior to the training event. Units must submit the following information when submitting their requests: A. Type and amount of blank ammunition and pyrotechnics; B. Type of training being conducted; C. Dates and times of used; D. Proposed Locations (MGRS Grid).**
- 9. Missing or lost weapons must be reported to the AHATS TAC immediately by serial number and type of weapon.**
- 10. The only SDZ we have on AHATS is located on the EAST side of Camp. This is the Ramsey County Archery Range along Lexington Ave. It is marked in red on Maps and the danger here is stray Arrows that come across our perimeter fence from time to time.**

SECTION 6: Environmental Management

1. General

- a. Environmental protection and conservation are the responsibilities of all personnel using AHATS. Commanders must ensure that no deliberate or excessive destruction of natural or cultural resources occurs during training exercises.**
- b. For more information on environmental management contact the AHATS TAC or Mrs. Mary Lee at the AHATS Office at 651-634-5229.**

2. Spill Control

“ANY PERSON CAUSING OR DISCOVERING A SPILL WILL”

- a. Stop the flow, if possible without exposing self or others to unsafe conditions.**
- b. Contain the spill using whatever means that are readily available. Prevent the spill from flowing into drainage and surface waters.**
- c. Immediately report spills of POL and Hazardous Substances to Range Control 320-632-7298 and the TAC 651-775-1284. Gather essential spill info to include: grid location (8digit), material spilled, its cause, time of incident, and estimated quantity spilled. The person reporting the spill should also furnish their name, unit, rank, address, and telephone number.**
- d. Clean up spill material. If the amount is LESS than what would fit in a 55 gallon drum, dig it out and transport it to FMS - 3 or FMS - 8 then the TAC will make arrangements to transport to Camp Ripley. If the amount is GREATER than what would fit in a 55 gallon drum, some excavating maybe required for removal from the TAC and DPW here at AHATS.**
- e. Units will complete the Incident report Form, MNGR 200-21 (Spill Report) and turn it into the TAC.**
- f. ALL SPILLS MUST BE CLEANED, NO MATTER HOW BIG OR SMALL.**

3. Wildlife

All wildlife within AHATS is protected. In addition, State and Federal laws allow for fines and /or jail for harming wildlife unless provisions for a special hunting season are authorized.

- a. AHATS supports several wildlife species, some of which are protected under Federal of State laws. When these or other species are observed on the ground, care should be taken to avoid them with vehicles or damaging activity.**
- b. The most likely species to be observed on roads and trails or in fields is the Blanding’s Turtle. The most likely time to encounter the turtles is in June when they are crossing roads between water and nesting sites. The Blanding’s Turtle measures up to 10 inches across. It can be identified by its high domed shell which looks like a hard hat and the streaking yellow lines underneath its neck.**

- c. **Other protected wildlife species that may be observed include birds such as the Trumpeter Swan, Osprey, Loons, and the Plains Pocket Mouse.**
- d. **When rare or unusual wildlife is observed, whether live or dead, it should be reported to the TAC. The reporting information will consist of: type of wildlife or best description, date and time observed, observer's name, grid location (8 digit) any comments about behavior or possible cause of death.**
- e. **All wild animals, especially skunks and raccoons, are potential carriers of the rabies virus. Individuals should not handle or feed any wild animals. If an animal bites or scratches you, seek medical assistance immediately. Report all sick or dead animals to the TAC.**
- f. **The Glacier Kame is located at 873943 and is restricted to foot traffic only.**

4. Wastes

- a. **General: All solid waste generated on AHATS must be removed by the using unit and hauled back to their home station for proper disposal.**
- b. **The waste most commonly generated during training exercises includes dry cell batteries, weapons cleaning rags and individual protective mask filters.**

Field latrines or "cat holes" can be dug however only in certain dig areas. Portable toilets maybe ordered at the unit's expense and are a requirement during winter. On Site Sanitation is the only company we utilize here. The TAC and On Site Sanitation have designated 4 spots down range for the Porta Potties to be placed

#1 Hamline Ave parking lot next to the EST 2000 Building (876923)

#2 LZ-1 (876928)

#3 LZ-2 (875941)

#4 On Road by the Boyscout Camp (870936)

On Site Sanitation: 1-800-210-8407 or (651) 429-3781 POC is Stacy Prestegard the Special Events Coordinator

5. Vegetation

- a. **No cutting of vegetation is allowed without written permission from the TAC.**
- b. **The use of dead trees or fallen trees for cover is allowed.**

6. Lyme Disease

- a. **General: there are two types of ticks commonly found at AHATS (Deer Tick and Wood Tick). Since the Deer tick can potentially transmit Lyme disease, preventive measures should be taken when training at AHATS, particularly during the tick season (April to October). Preventive measures include:**
- b. **Wear your uniform with pants bloused into boots and sleeves down.**
- c. **Use repellants on exposed skin and spray uniforms.**

- d. Check for ticks frequently using the buddy system.
- e. All ticks should be removed by grasping the tick as close to the skin as possible and gently, but firmly pulling it straight out. Wash the bitten area with soap and water and apply an antiseptic.
- f. If you find a deer tick attached to your body report it to the AHATS TAC ASAP. Upon removal of the deer tick, it will be sent to a laboratory for analysis. The results of the analysis will be provided to the patient.

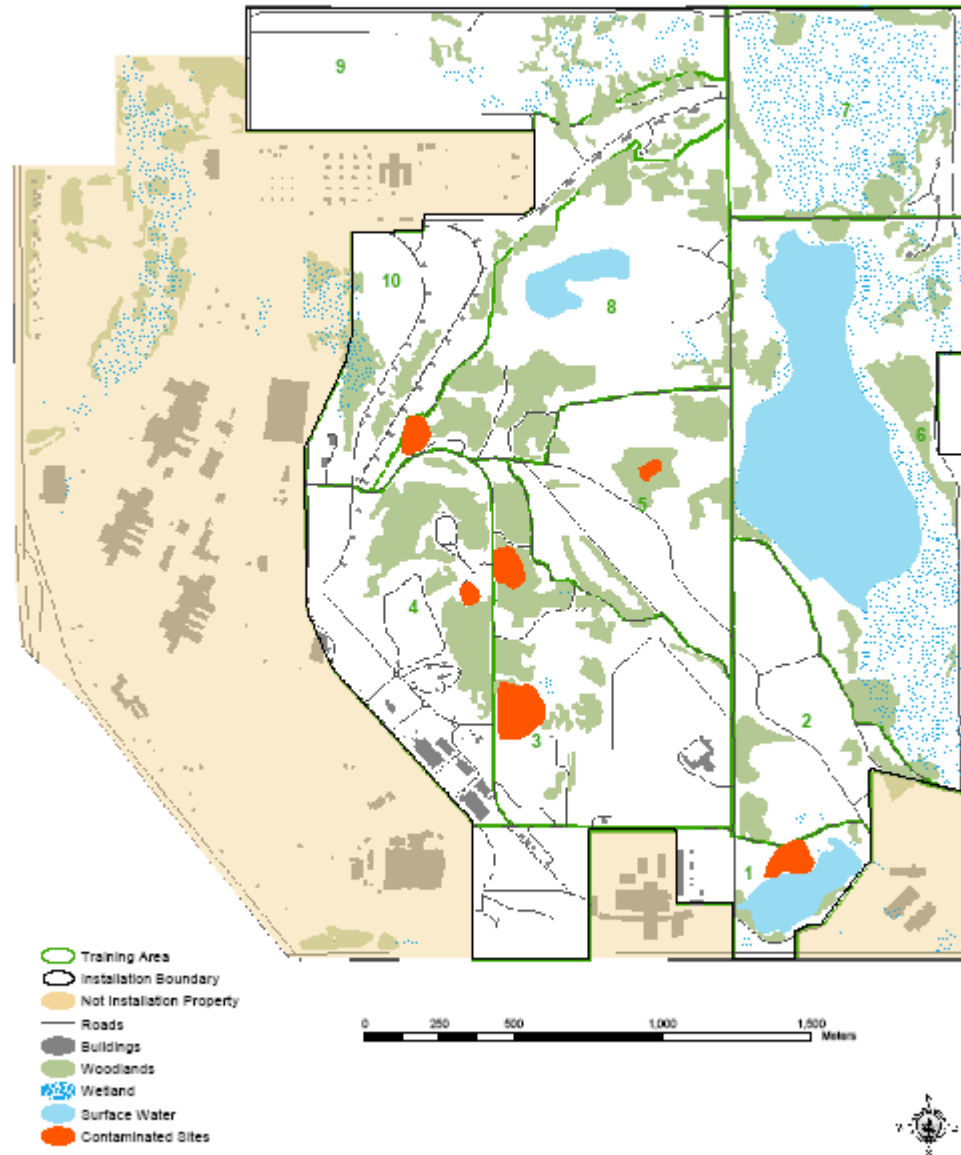
Section 7: Digging

1. **General:** The SIX Cleaned areas that are surrounded by yellow signs that say “ **CAUTION SOLID WASTE DISPOSAL AREA WITHIN THIS PERIMETER DO NOT DIG OR DISTURB SOIL**” is a “**NO DIG AREA**” Because of the past contaminated sites on AHATS mechanical and hand digging or earth excavation requires written approval from the TAC. The Request will include type and grid location of excavation with time and duration to be used. The TAC will approve permits with concurrence from the Department of Public Works (DPW) to ensure facilities (above and below ground) are not affected. The Digging Permit will also be coordinated with the Environmental Office.
2. Digging is restricted in the following areas:
 - a. Signed tree plantations and 100 meters of historical sites.
 - b. 100 meters from bodies of water or wetland.
 - c. 25 meters from soil clean up site.
 - d. 50 meters from main roads.
 - e. The AHATS TAC has maps of “NO DIG AREAS” if needed.

“DO NOT DIG UNTIL YOU HAVE BEEN CLEARED BY AHATS TAC OR ENVIRONMENTAL”

Arden Hills Army Training Site

Contaminated Sites



Section 8: Fires

- 1. There are “NO FIRES” allowed at anytime on AHATS. If a fire starts, contact AHATS TAC with the grid location, direction of travel, estimated size, speed, and type (grass, wood). Then contact the Lake Johanna Fire Department by dialing 9-1-1.**

Section 9: Petroleum, Oil, and Lubricants (POL)

- 1. General: POL distribution from mobile units is an activity that has the potential of posing environmental concerns. Therefore, the following guidance is provided to prevent any negative impacts.**
- 2. The proposed location of distribution points should be coordinated with the AHATS TAC.**
- 3. Units should be familiar with the Spill control procedures as previously listed in this section.**
- 4. Use drip pans at all times for the dispensing nozzles and the dispensing area should be lined with a small piece of impermeable liner such as plastic or an old fuel bladder.**
- 5. Ensure that the fueling hose is drained into the drip pan after each fueling operation and hang the hoses with the nozzle pointed up.**
- 6. Provide empty drums for accumulating POL contaminated soil in the event of small spills. The drums should be labeled “POL Contaminated Soil”.**
- 7. Empty containers should be available to accumulate contaminated/waste fuels. One container for each type of fuel and the containers should be labeled accordingly.**
- 8. Each POL distribution point should be equipped with a spill kit in the event of a spill. The kit should include absorbent materials, shovel and plastic storage bags.**

Section 10: Clearance Procedures

- 1. General: The TAC will inspect all training areas and bivouac sites. Ensure the following is accomplished.**
- 2. Units will conduct a thorough police call of the entire area. Remove all garbage, trash, and other debris from the field and dispose of it at your home station.**
- 3. Fill in all fighting positions and restore them and the area to its original condition.**
- 4. Remove all forms of wire, engineer tape, IED’s, self made land navigation stakes, etc...etc... from training areas before leaving site.**
- 5. Remove and disassemble positions barriers in the training area, open all roads and trails.**

NOTICE- Using unit’s POC will be held responsible for the clean up and clearing of their areas. The areas will be inspected by the AHATS TAC. If the

area is considered unacceptable that POC will be notified and asked to return to that training area for proper clean up.

Section 11: Tracking Usage and Key Control

1. **General:** All activities within the training areas will be recorded through the Range Facilities Management Support System (RFMSS). This information will be gathered using the ATS Form 23. It is important that using units be as accurate as possible with their data when submitting the ATS Form 23.
2. The using unit will be required to hand receipt a key to the barrier gate. These keys can be obtained through the TAC. A unit representative will need to coordinate with the TAC for a key issued.
3. During training the using unit is to place a gate guard on the access gate if the unit has a need for multiple entrance/exit times throughout the day. **“UNDER NO CIRCUMSTANCES IS THE ACCESS GATE TO BE LEFT UNLOCKED AND UNMANNED AT ANYTIME”.**
4. Once training is completed that using units POC needs to drop the key off in the Drop Box on Hamline Ave, the AHATS TAC will retrieve the key from that location and take care of any necessary paperwork for that unit. Remember to leave the Orange Barriers in front of Hamline Gate #1. There is also a Mailbox located on the gate for units to place Land Navigation Booklets in once finished. This will alleviate units making a separate trip for this reason.

EVERYTIME YOUR UNIT GOES DOWN RANGE IT MUST BE IN RFMSS. NO LONG TERM KEYS WILL BE ISSUED; THEY MUST BE DROPPED OFF IN THE DROP BOX ONCE TRAINING HAS BEEN COMPLETED.

SECTION 12: Storage of Government Property

1. **General:** Government property will be stored within AHATS in accordance with applicable requirements of AR 190-51.
2. Weapons and Ammunition will not be stored on AHATS. Weapons may be brought onto the installation as required by unit training and will be protected well on the installation in accordance with AR 190-11. Physical Security of Arms, Ammunition, and Explosives.
3. Unit storage locations within AHATS will be designated by the Operations Officer, at Camp Ripley. Storage locations are on the Northwest corner of the post in the new metal buildings. Each unit has there own building. There is no other storage available for most of the “older” buildings are in the process of being torn down unless the building is salvageable. Individual units are responsible for providing required locks for all storage areas.

4. Any loss or damage to stored property will be reported to the TAC as soon as possible.
5. A risk analysis of each storage location will be completed by Camp Ripley Security prior to occupancy.

SECTION 13: Emergency Procedures

1. **General: Emergency requests for medical evacuation, law enforcement or fire department support will be requested from the Ramsey County Sheriffs Office Dispatcher. The services are all provided by local civilian agencies. The Dispatcher can be contacted through (911) or (651) 484-3366. Inform the Dispatcher that you are located on the Arden Hills Army Training Center. The Fire Department and Police Department have keys to the Hamline Gates both North and South. They may need an escort at the Hamline gate to get to your location.**
2. **In the event of a missing weapon or other sensitive item the unit will initiate action in accordance with that units higher headquarters SOP.**
3. **Emergency Contact Numbers:**
 - a. **AHATS TAC SSG LeClair (651) 775-1284 (651) 634-5229**
 - b. **Camp Ripley Range Control (320) 632-7298**
 - c. **Camp Ripley Security (320) 632-7375**
 - d. **Ramsey County Sheriff (651) 484-3366 or (911)**

AHATS IS CONSIDERED TO BE CAMP RIPLEY SOUTH. THE RULES THAT APPLY AT CAMP RIPLEY APPLY HERE WITH THE EXCEPTION THAT THERE IS “NO LIVE FIRE” AT AHATS.

