



The Minnesota National Guard is conducting flood fighting operations in order to support civil authorities along the Red River Valley

More than 450 Minnesota Army National Guard Soldiers from the Moorhead-based 2nd Combined Arms Battalion, 136th Infantry are currently supporting flood fighting activities.

The Minnesota Air National Guard is supporting the flood fight with two Joint Military Platform (JCP) trailers. The trailers provide satellite, telephone, radio, data, and wireless capabilities, allowing officials to lead flood-fighting even when the area suffers power outages.

Minnesota National Guard by county

Wilkin County: 41 personnel and 9 vehicles



Continuing dike patrols throughout the day and assisting civilian sandbagging operations.

Clay County: Over 288 personnel and 99 vehicles



Dike construction continues in Moorhead and is in 24 hours operations. Operations continue in support of traffic control and security of sandbag sites.

Norman County: 50 personnel and 12 vehicles

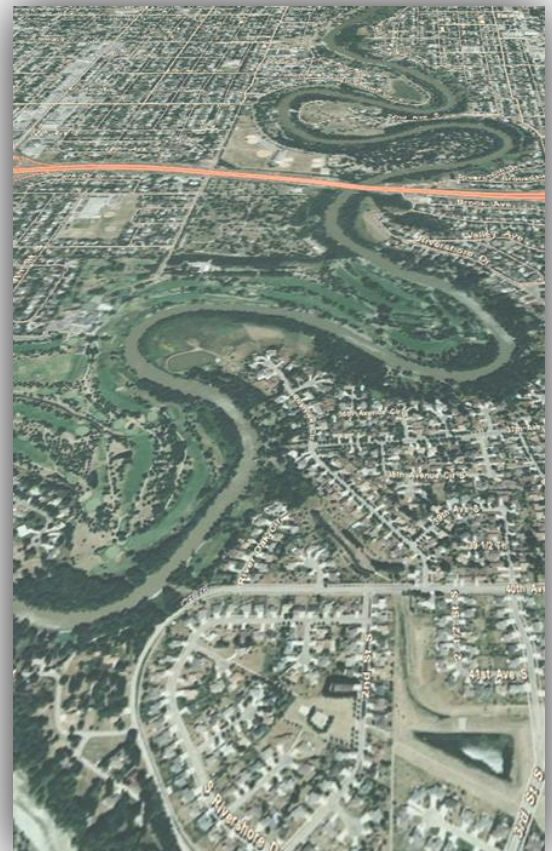


Providing dike patrols, sandbag movement, and monitoring and securing of 9 pumps within the cities of Perly, Hendrum and Halstad.

Polk County: 71 personnel, 13 vehicles



Polk County Task Force currently staged in Crookston Armory. One Joint Communication Platform (JCP) trailer has arrived in Crookston ready to back up communication systems if necessary.



The Minnesota National Guard, under the direction of the Governor, will continue to provide assistance to civil authorities in support of flood fighting efforts.

Minnesota National Guard equipment in use

- 1 – UH-60 “Black Hawk”
- 1 – Joint Communication Platform trailer in Crookston
- 1 – Joint Communication Platform trailer en route to Moorhead
- 2 – forklifts
- More than 100 military vehicles

Minnesota National Guard in the next 24 hours

2-136 IN (CAB) will continue to support Clay County to secure 13 sandbag sites, 5 pump sites, dike patrol of 3.5 miles of sandbag dikes and traffic control points throughout the city of Moorhead

2-136 IN (CAB) will continue to support Clay county for patrolling 1.5 miles of dike in Georgetown in support of local authorities

2-136 IN (CAB) will continue to support Wilkin County to conduct dike patrols along 9 miles of dikes and observation the ice jams at three bridges in Breckenridge

2-136 IN (CAB) continues to support Norman County to provide dike patrols, sandbag movement and the monitoring and securing of pumps within the cities of Perly, Hendrum, and Halstad.

133rd and 148th Wings continue to support the flood fight with specialized communications equipment and data transmission.

FOR MORE INFORMATION, CONTACT: Minnesota National Guard Public Affairs at public.affairs@mn.ngb.army.mil.